



## Welcome to GWANGJU!

Gwangju is the largest city in Jeollanam-do Province with a land area of 501.19km<sup>2</sup> and a population of 1.46 million. The city is adjacent to Damyang to the northeast, Jangseong to the north, Hampyeong to the west, Naju to the south, and Hwasun to the southeast.

Gwangju has long been the administrative, economic, social, and cultural center in Jeollanam-do Province. Thus, all administrative and business functions are concentrated in this city. The city also benefits from expansive agricultural fields, coastal industrial zone, and fisheries industry of the region.

Gwangju is striving to establish itself as a world-class city of democracy, human rights, and peace through designation as a human rights city by the United Nations.



## GWANGJU

### Convention & Visitors Bureau

Financed by the Gwangju Metropolitan City Government, the Gwangju Convention & Visitors Bureau is a public organization working to promote the city of Gwangju. It attracts various conferences, exhibitions, and tourists by marketing the infrastructure of the city and its vicinity. Through its activities, the bureau helps raise the status of the city, enhance its competitiveness, and induce economic effects.

#### \*Major Activities

- Promote and make arrangements to attract conventions and tourists
- Attract conventions and offer administrative and financial support to event organizers
- Carry out cultural tour programs and international exchange activities
- Offer consultation and recommendation for the promotion of the convention industry and tourism sector

\*Tel : +82-62-611-3613

\*Website : [www.gwangjucvb.co.kr](http://www.gwangjucvb.co.kr)

## KOREA MICE Bureau

Korea MICE Bureau(KMB), under the auspice of the Korea Tourism Organization, aims to establish Korea as a premier destination for tourists, convention delegates and business travelers. KMB, as the government's leading MICE agency, has for nearly 30 years worked to provide a wide range of advice and assistance to those considering holding meetings in Korea. KMB also works closely with organizers, meeting planners, and other regional convention bureaus to ensure that every meeting held in Korea is successful as well as memorable.

\*Address : 40, Cheonggyecheon-ro, Jung-gu, Seoul

\*E-mail : [micekorea@knto.or.kr](mailto:micekorea@knto.or.kr)

\*Website : <http://k-mice.visitkorea.or.kr>

\*Korea Travel hotline : In Korea 1330 From Abroad +82-2-1330



“  
Look inside for  
Best items!  
”

Touch  
Taste  
Shop

in  
Gwangju!



KOREA  
TOURISM  
ORGANIZATION



광주관광컨벤션뷰로  
GWANGJU CONVENTION & VISITORS BUREAU

## Touch <sup>in</sup> Gwangju!



### Yangrim-dong History and Culture Village

Yangrim-dong History and Culture Village was the channel through which modern-day Western culture came into the city during the enlightenment period. Thus, it is where the spirit of modernization first emerged in Gwangju. Traditional cultural assets are well preserved, including Christian cultural relics, the residence of Lee Jang-wu (tile-roof home of an upper class family of the Joseon Dynasty), and the residence of Choi Seung-hyo (home of an independence activist; a great example of how local residences evolved through the transition from the end of the Korean Empire period to the enlightenment period).

- \*By bus : Geumnam 55, Jiwon 53, Bongseon 37, Jiwon 45, Geumnam 59, Suwan 49
- \*Tel : +82-62-650-7639
- \*Website : <http://www.utour.gwangju.go.kr>



### Mudeungsan Mountain

Mudeungsan Mountain is the 21st national park in Korea. Rising 1,189 meters above sea level, on this Gwangju bus no.1189 go up to Mudeungsan Mountain. Mudeungsan features Seoseokdae and Ipseokdae Rocks on the summit. These are jusangeolli columnar joint rocks formed by the rapid cooling of volcanic eruptions in the later part of the Cretaceous period in the Mesozoic Age.

- \*By bus : Cheomdan 09, Jiwon 35, Jiwon 50, Jiwon 51, Jiwon 54, Bongseon 76, 1187
- \*Tel : +82-62-365-1187
- \*Foreign language services not available
- \*Hours of operation : 09:30-17:30 (winter time : 09:30-17:00)
- \*Website : <http://mudeungsan.gwangju.go.kr>



### Yangdong Market

Selected the Best Traditional Market in Korea, Yangdong is one of the major traditional markets in Gwangju that opened in 1975. Shoes, clothes, and various other items are sold at affordable prices.

- \*By subway : Line 1 [Yangdong Market/Dolgogae]
- \*By bus : Bongseon 37, Cheomdan 30, Geumho 36, Songam 31, Songam 72
- \*Foreign language services not available
- \*Closed on the third Sundays of every month

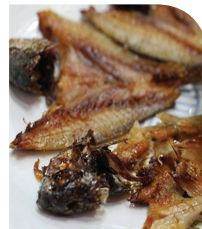
## Taste <sup>in</sup> Gwangju!



### Sangchu twigim

Sangchu twigim is a snack food unique to Gwangju. Small deep-fried strips of squid and various other ingredients are dipped in soy sauce and then wrapped in lettuce with a small piece of hot pepper. This simple dish is cheap and tasty. It is available in most snack restaurants in downtown or near universities in Gwangju.

- \*Eunseong Gimhap (Chungjang-ro, Dong-gu)
- \*Tel : +82-62-227-9642
- \*Suwan Sangchu Twiggim (Suwan district)
- \*Tel : +82-62-962-0800
- \*Price : Around 3,500 won



### Nokcha gulbi

A prix-fix menu of Gwangju, nokcha gulbi consists of grilled yellow corvina and rice served with green tea. Cold tea is poured over the white rice. Various side dishes are also served, including seasonal vegetables, dried seafoods, and salted fish.

- \*Yeonhan Jeongsik (Ssangchon-dong, Seo-gu)
- \*Tel : +82-62-373-9933
- \*Joseonok (Bongseon-dong, Nam-gu)
- \*Tel : +82-62-654-3322
- \*Price : Around 15,000 won



### Seasonal foods

Most famous restaurants in Gwangju serve fresh, seasonal foods like young greens in the spring, fresh vegetables in the summer, mushrooms and seafoods in the fall, and maesaengi tteokguk (sliced rice cake and seaweed fulvescens soup) in the winter. Don't miss the yukjeon, which is Korean pancake made with shredded beef and a pride of Gwangju cuisine.

- \*Yeonhwa (Chipyeong-dong, Seo-gu)
- \*Tel : +82-62-384-1141
- \*Daegwang (Bullo-dong, Dong-gu)
- \*Tel : +82-62-223-3598
- \*Price : Around 25,000 won



## Shop <sup>in</sup> Gwangju!



### Lotus and Jogakbo Lamp

This LED lamp features a beautiful exterior made with traditional jogakbo craftwork and LED lights, which is one of the major industries of Gwangju. The lamp is an official tourist product for the Universiade Gwangju 2015.

- \*Product available for purchase at SuRyeoJae
- \*Address : SuRyeoJae, 62-2 Gung-dong, Dong-gu, Gwangju (situated inside the Street of Art)
- \*By bus : Munheung 39, 419, Geumnam 57, Geumnam 58, Seokgok 87, Songam 74, Songjeong 98, Suwan 49, Jiwon 151, Pungam 61, Jinwol 07, Pungam 06
- \*By subway : Line 1, Geumnamno 4-ga station or MunhwaJeondang (Culture Complex) station exit 4
- \*Tel : +82-62-222-0889
- \*Price : Around 30,000 won



### Hand-made Pens

This quality hand-made pen is made by applying lacquer on hackberry wood. It is a major craft product of Gwangju that won a prize at the Korea Tourist Souvenir Product competition. One was specially made and given as a gift to Aung San Suu Kyi during her visit to Gwangju. The pen offers timeless beauty as it is made using a 450 year-old hackberry wood and lacquer coating to preserve the wood.

- \*Product available for purchase at Ujin Gongyesa (Ujin Crafts)
- \*Address : Room 110, Bitgoeul Gongye Changjakchon, 893-2 Yanggwa-dong, Nam-gu, Gwangju
- \*By bus : 70, 99, 170
- \*Tel : +82-10-4115-9851
- \*Prices : 50,000-500,000 won



### Jindaribut brush

Designated Intangible Cultural Property No. 9 of Jeollanam-do Province, jindaribut is traditional brush whose name originated from the old name of Baegundong. The brush is soft and yet firm. The brush absorbs ink well and is great for calligraphy, so it is a must-have among calligraphers.

- \*Product available for purchase at Gwangju Jeonnam Crafts Cooperatives
- \*Address : 23 Gumnamno 1-ga, Dong-gu, Gwangju
- \*By bus : Munheung 39, 419, Geumnam 57, Geumnam 58, Seokgok 87, Songam 74, Songjeong 98, Suwan 49, Jiwon 151, Pungam 61, Jinwol 07, Pungam 06
- \*By subway : Line 1, MunhwaJeondang (Culture Complex) station
- \*Tel : +82-62-223-7040
- \*Price : From 80,000 won